



A Word From Our Radiologist

"What our 3T MRI provides is excellent image quality, superb diagnostic capabilities, and exceptional patient comfort with a large, patient-friendly 70-cm opening," says Manfred Henne, MD, PhD, board certified radiologist and owner of InHealth Imaging. "I would like to make a football analogy regarding the 3T MRI because this new machine is like a running back, it is very, very fast. And like a quarterback it is very precise. Additionally, it will accommodate any linebacker because there is so much room. With one foot of spacious headroom, patients won't feel as if they are nose to nose with the top of the magnet. This means the tight confines in older MRIs are a thing of the past. We are very excited to bring this new technology to our patients."

Our Commitment To You

Superior life-saving technology has established InHealth Imaging as the regional leader in Diagnostic and Preventive Imaging. InHealth Imaging was the first facility to offer 3D mammography in the Pacific Northwest and is now the only center on the Kitsap and Olympic Peninsulas offering low radiation 3D mammography. Our Board Certified Radiologists provide the most advanced imaging technology and information to help you stay InHealth.

Examination results are communicated to you by the radiologist immediately after your procedure and are then shared with your physician through our secure PACS (Picture Archiving and Communications System) portal. We are dedicated to providing each of our patients with individualized services.



360-598-3141

Poulsbo | Silverdale | Port Orchard
www.inhealthimaging.com
Main Office: 20700 Bond Road NE
Poulsbo, WA 98370

3Tesla MRI



Our state-of-the-art 3T MRI offers maximum comfort, optimized exam time and the confidence that the images generated will be of the highest resolution.

360-598-3141

Poulsbo | Silverdale | Port Orchard
www.inhealthimaging.com

InHealth Imaging Offers 3T MRI

InHealth Imaging recently installed a state-of-the-art 3T MRI, the strongest scanner clinically available. Prior to the clinical 3T MRI, the standard was a 1.5T MRI. InHealth Imaging's 3T MRI creates a magnetic field twice as powerful as a 1.5T MRI and 10 to 15 times stronger than open or lower field MRIs. Given the tremendous technological improvements achieved with 3T MRI technology, we recommend you request a 3T MRI when your doctor prescribes an MRI test.

What is a 3T MRI?

3T MRI is an advanced scanner, allowing for faster scans, clearer images and a more accurate diagnosis. Magnetic resonance imaging, or MRI, is a non-invasive test that uses magnetic waves to take two and three-dimensional pictures of the inside of the body, thus there is no radiation. T stands for Tesla, which is a unit of measurement of the magnetic field strength created by the MRI system.

3T MRI Services are Offered at Our Centrally Located Poulso Office

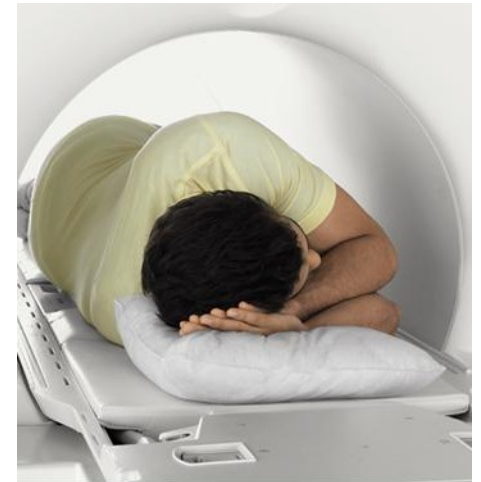
InHealth Imaging offers 3T MRI exams at our main facility in Poulso. We are able to offer these procedures inside our newly renovated Poulso office thus affording patients considerable cost savings as there are no additional consultation or facility charges.

What Happens During My Exam?

MRI scans require you to remain very still, to avoid blurriness in the images. The 3T MRI system is shaped like a large doughnut with the center designated as the gantry. The patient table will move slowly through the gantry. Your Technologist will leave the room and give you instructions through an intercom, such as "hold your breath." The Technologist will then take the scans. You will know the exam has begun once you have heard loud clicks. These clicks signal that the scans of the body are being taken. You can request ear plugs if the clicks are bothersome. When the exam has been completed, you will slide out of the scanner.

If contrast dye is used:

If during your test a contrast is required, a small IV needle is inserted into your hand or arm before you slide into the MRI scanner. First, a saline solution is dripped into your vein to prevent clotting. Then, the dye is injected. Some people may have an allergic reaction to the dye, this however is rare.



Why Choose 3T MRI?

There are three reasons you should choose a 3T MRI. They include:

Comfort—the more open design accommodates all patients and helps reduce anxiety and claustrophobia.

Speed—Exclusive TIM (Total Imaging Matrix) technology assists in making exams much faster.

Clarity—Compared to lower strength MRIs, a 3T MRI provides superior images and finer anatomic detail, making it especially beneficial to analyze conditions of the brain, spine, prostate, musculoskeletal, and vascular systems resulting in earlier disease detection.